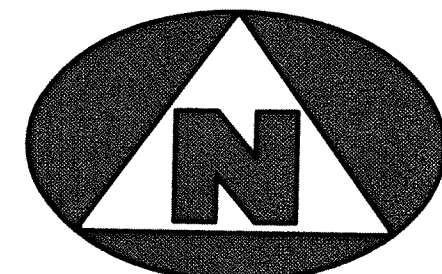


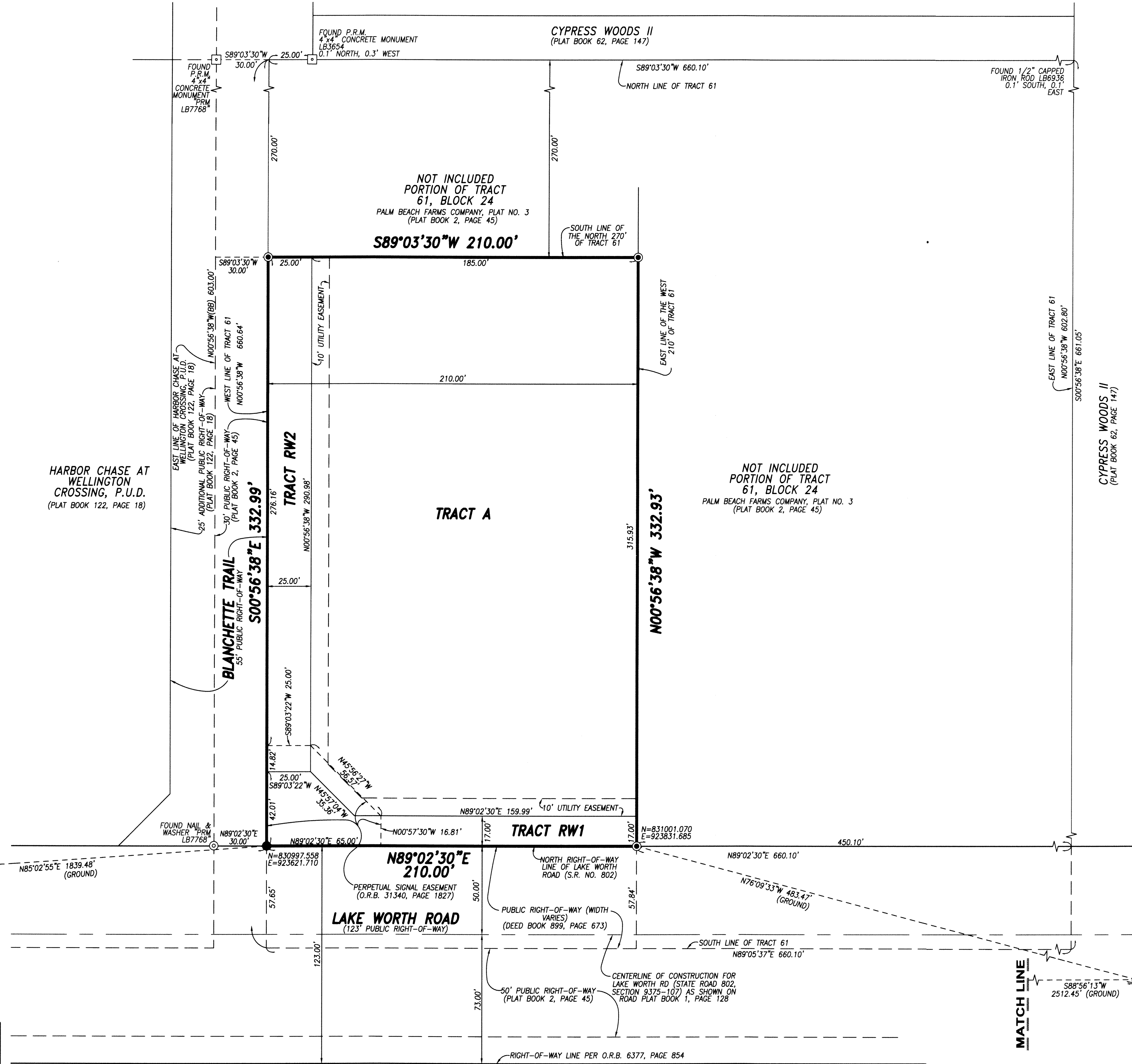
**TERNION MUPD**

BEING A REPLAT OF A PORTION OF TRACT 61, BLOCK 24, PALM BEACH FARMS COMPANY, PLAT NO. 3, ACCORDING TO THE PLAT THEREOF, AS RECORDED IN PLAT BOOK 2, PAGES 45 TO 54, PUBLIC RECORDS OF PALM BEACH COUNTY, FLORIDA, LYING IN SECTION 29, TOWNSHIP 44 SOUTH, RANGE 42 EAST, PALM BEACH COUNTY, FLORIDA

30



0 15' 30' 60'  
**GRAPHIC SCALE**  
 (IN FEET)  
 SCALE 1" = 30'



**NOTES**  
**COORDINATES, BEARINGS AND DISTANCES:**

1. THE BEARING BASIS (BASE BEARING), AS SHOWN HEREON, IS BASED ON THE STATE PLANE GRID AZIMUTH BEARING OF N00°56'38"W, ALONG THE WEST LINE OF HARBOR CHASE AT WELLINGTON CROSSING, P.U.D., PLAT BOOK 122, PAGE 18, AS SHOWN HEREON, AND ALL OTHER BEARINGS ARE RELATIVE THERETO.
2. THE COORDINATES SHOWN HEREON ARE STATE PLANE GRID COORDINATES ACCORDING TO THE TRANSVERSE MERCATOR PROJECTION OF THE FLORIDA EAST ZONE, NAD 83 (1990 ADJUSTMENT).
3. THE LINEAR DIMENSIONS SHOWN HEREON ARE GROUND DISTANCES IN U.S. FEET AND DECIMAL PARTS THEREOF, UNLESS NOTED OTHERWISE.
4. THE GROUND DISTANCE TO GRID DISTANCE SCALE FACTOR IS 1.0000236 (GROUND DISTANCE X SCALE FACTOR = GRID DISTANCE)

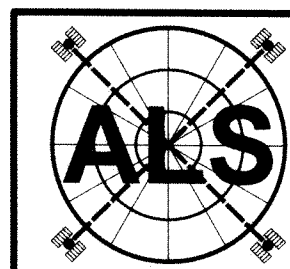
**MATCH LINE**  
 FOUND PALM BEACH COUNTY HORIZONTAL CONTROL POINT BRASS DISK IN CONCRETE UNDER METAL COVER STAMPED "CROSSING"  
 N=830839.791  
 E=921789.033  
 S88°56'13"W  
 2512.45' (GROUND)

**MATCH LINE**  
 FOUND PALM BEACH COUNTY HORIZONTAL CONTROL POINT BRASS DISK IN CONCRETE STAMPED "SUMMER"  
 N=830885.409  
 E=924301.132  
 S88°56'13"W  
 2512.45' (GROUND)

**LEGEND**

○	SET PERMANENT REFERENCE MONUMENT 5/8" IRON ROD & CAP STAMPED "PRM LB7344"		
●	SET PERMANENT REFERENCE MONUMENT NAIL AND WASHER STAMPED "PRM LB7344"		
CA	CENTRAL ANGLE	PCC	POINT OF COMPOUND
CB	CHORD BEARING	PRC	POINT OF REVERSE CURVATURE
CD	CHORD DISTANCE	PT	POINT OF TANGENCY
C/L	CENTERLINE CURVATURE	R	RADIUS DISTANCE
L	ARC LENGTH	R/W	RIGHT-OF-WAY
NT	NOT TANGENT		
O.R.B.	OFFICIAL RECORDS BOOK		
PC	POINT OF CURVATURE		

**PREPARING SURVEYOR & MAPPER'S STATEMENT**  
 THIS INSTRUMENT WAS PREPARED BY STEPHEN L. SHIRLEY, PROFESSIONAL SURVEYOR AND MAPPER NO. 3918, IN AND FOR THE OFFICES OF ASSOCIATED LAND SURVEYORS, INC., 801 NORTHPOINT PARKWAY, SUITE 35, WEST PALM BEACH, FL 33407



**ASSOCIATED LAND SURVEYORS, INC.**  
 801 NORTHPOINT PARKWAY, SUITE 35  
 WEST PALM BEACH, FL 33407  
 PHONE: (561) 848-2102 FAX: (561) 844-9659  
 LB NO. 7344 EMAIL: als@alsurvey.net